

Mission

A single virtual national clinical imaging research laboratory for 5.5 million people which will be unique in the world







A virtual national training “college” for imaging researchers of the future

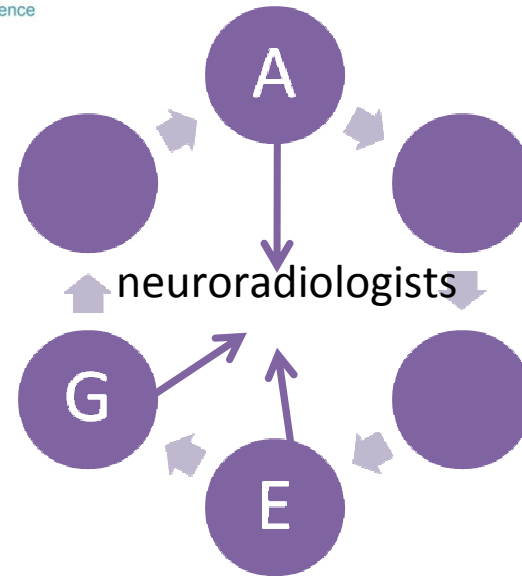
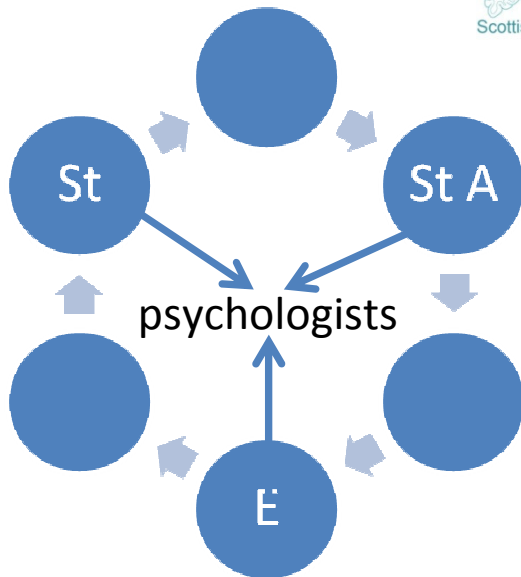
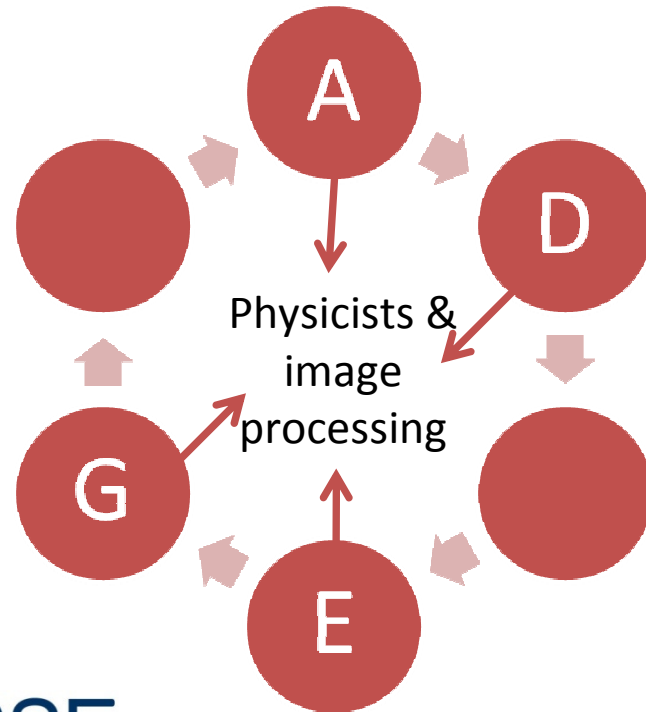
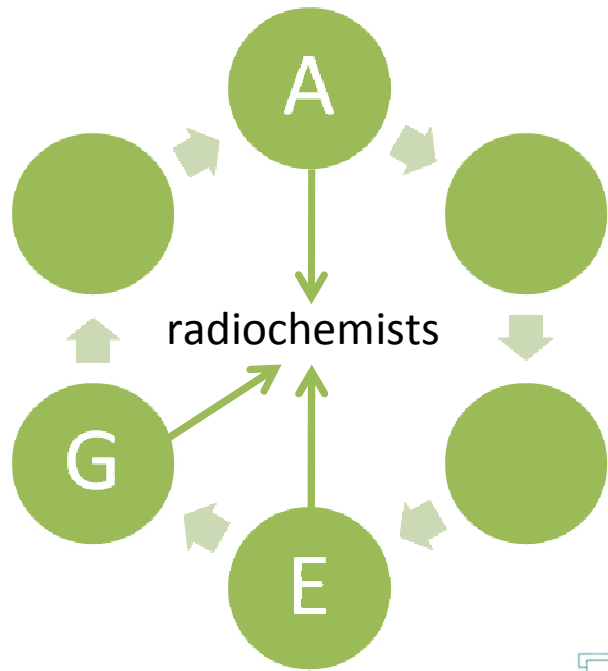
Multi-disciplinary Executive

	Lead		Deputy	
	Dr Alison Murray	Neuroradiologist	Dr Andy Welch	Physicist
	Dr Richard Lerski	Physicist	Dr Astrid Schloerschmidt	Psychologist
	Prof Joanna Wardlaw	Neuroradiologist	Dr Robin Sellars	Neuroradiologist
	Dr Donald Hadley	Neuroradiologist	Dr Jonathan Owens	Radiochemist
	Dr Arlene Astell	Psychologist	Prof Mike Anderson	Cognitive Neuroscientist
	Prof David Donaldson	Psychologist		

Multi-Modality



	 UNIVERSITY OF ABERDEEN	 UNIVERSITY OF DUNDEE	 THE UNIVERSITY OF EDINBURGH			 UNIVERSITY of STIRLING INNOVATION and EXCELLENCE
PET Spect	Yes	TBI	TBI	TBI	No	No
MRI 1.5T	Yes (NHS)	Yes (NHS)	Yes (research)	Yes (NHS)	No	No
MRI 3.0T	Yes (research)	Yes (research)	TBI (research)	Yes (NHS/res)	No	No
EEG	Yes	Yes	Yes	Yes	Yes	Yes



Multicentre research

1. Multicentre Stroke Project –

three centres, MR and CT, acute ischaemic stroke,
centralised image analysis

2. Multicentre fMRI study

reproducibility of paradigms on different MRI scanners

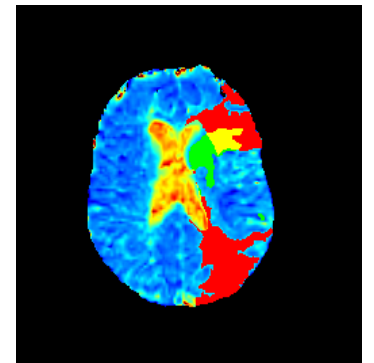
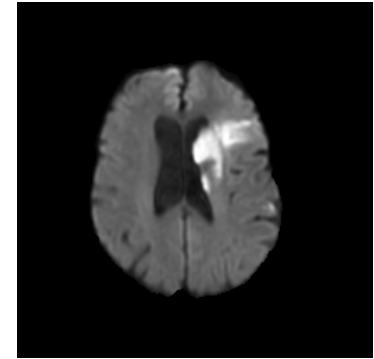
3. Multicentre molecular imaging project

two labs, novel tracers for neurological disease

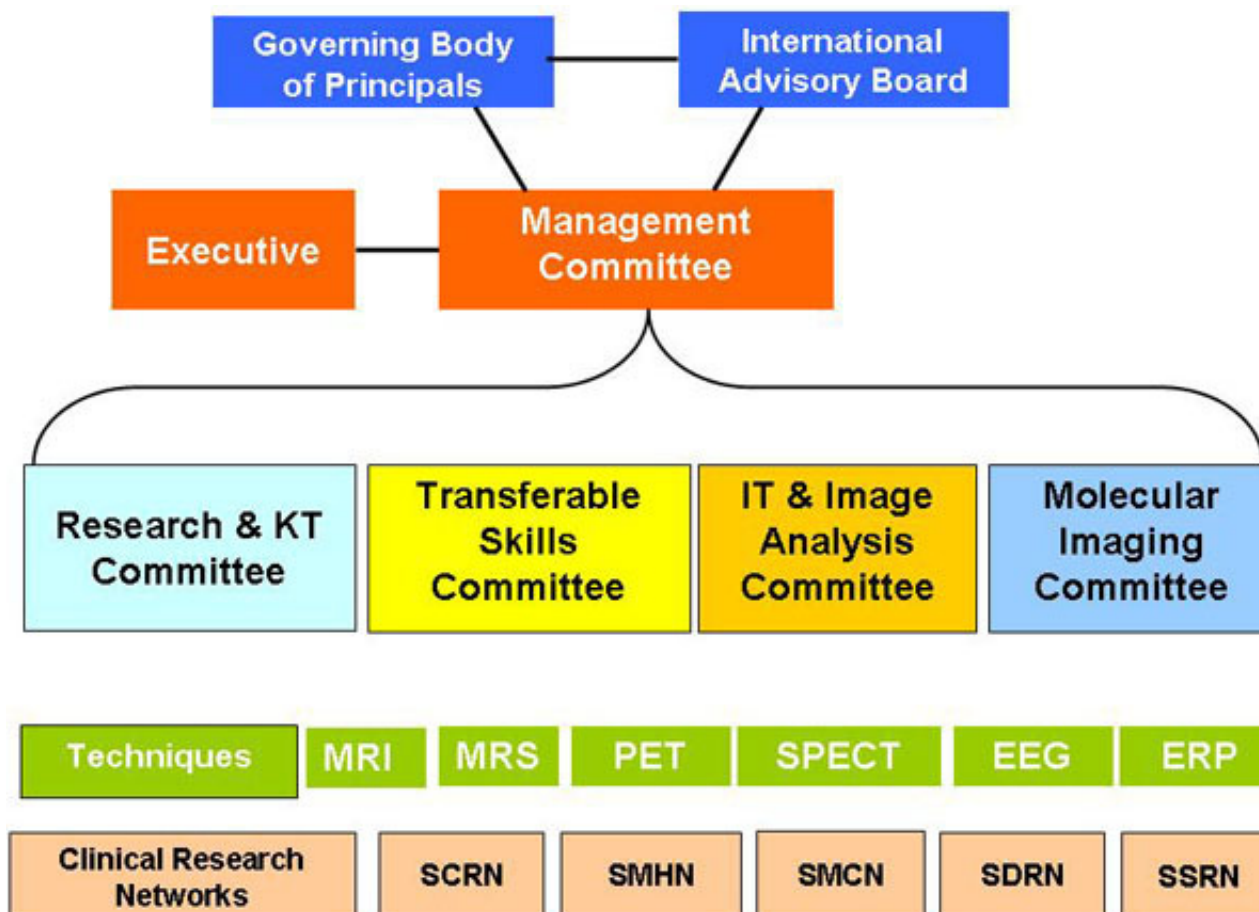
4. Multicentre Quality assurance programme

5. Multicentre Image management scheme (University – NHS)

6. Multicentre EEG network



Management Structure



Plan

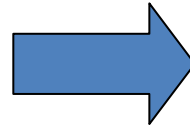
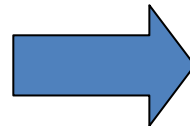
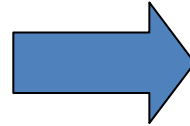
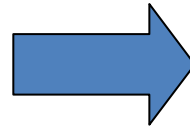
Boost for research infrastructure:

Staff – all levels

Equipment – key elements to achieve common platforms

Shared expertise between centres

Training – all levels, but particularly post-graduates and post-docs



Greater critical mass

Multicentre clinical trials

Optimise clinical trials

Apply these principles to multimodality brain research:

MRI

PET/SPECT

EEG/ERP/MEG

Equipment

- Radiochemistry lab upgrades
 - Aberdeen
 - Glasgow
- fMRI and EEG equipment
 - At procurement
 - Very advantageous tenders achieved through group approach
- MR scanner upgrades
 - Edinburgh complete
 - Aberdeen complete

Researchers

- 13/15 appointed
- 4 physicists/image analysts (post docs)
- 3 radiochemists (post docs)
- 4 radiographers
- 1 fMRI scientist (post docs)
- 1 computer scientist (post doc)

- 2 posts await advertising



5 Chairs in Imaging

SINAPSE is an alliance of six universities which, in partnership with the Scottish Funding Council and Chief Scientist's Office of the Scottish Government Health Department, is creating a shared, comprehensive, network for human neuroimaging research incorporating Magnetic Resonance, Molecular and Electrophysiology imaging techniques to meet the emerging opportunities and challenges primarily posed by clinical neuroscience research in health and disease.

3 Research Professors in Neuroimaging (non clinical)

SINAPSE seeks to appoint 3 outstanding Research Professors in imaging physics, Neuroimaging, Functional Imaging, Molecular Imaging or Image Analysis to augment the established strengths in these themes.

2 Clinical Research Professors in Imaging

We also seek 2 outstanding Research Professors in neuro, vascular or oncology imaging to establish imaging research programmes that complement the considerable existing clinical research strengths in these disciplines.

Successful applicants will have established internationally excellent research in imaging and will be expected to make significant contributions to enable

international quality research in Scotland. These positions may be held at any appropriate University within the SINAPSE consortium.

Potential applicants must contact those Universities whose research complements their own to discuss their interests and arrange a visit.

University of Aberdeen: Professor Mike Greaves,
e-mail: m.greaves@abdn.ac.uk, or tel: +44 (0)1224 553015.

University of Dundee: Professor Mike Coughtrie,
e-mail: m.w.h.coughtrie@dundee.ac.uk or tel: +44 (0)1382 632166.

University of Edinburgh: Professor Joanna Wardlaw,
e-mail: jwardlaw@staffmail.ed.ac.uk or tel: +44 (0)131 5372943.

University of Glasgow: Professor John Coggins,
e-mail: j.coggins@admin.gla.ac.uk or tel: +44 (0)141 3308137.

University of St Andrews: Professor Alan Miller,
e-mail: vpres@st-andrews.ac.uk or tel: +44 (0)1334 462625.

University of Stirling: Professor Ian Simpson,
e-mail: I.a.simpson@stir.ac.uk or tel: +44 (0)1786 467013.

For further particulars, including details of universities' interests, and general application enquiries please visit www.sinapse.ac.uk

Applications are being received on behalf of SINAPSE by FWB Executive Search Specialists. To request an application pack or submit a formal application, email: enquiries@fwbitd.com or contact Rhona Armstrong on 0131 538 7087

Closing date for full applications: 30 April 2008.

Committed to Equality and Diversity

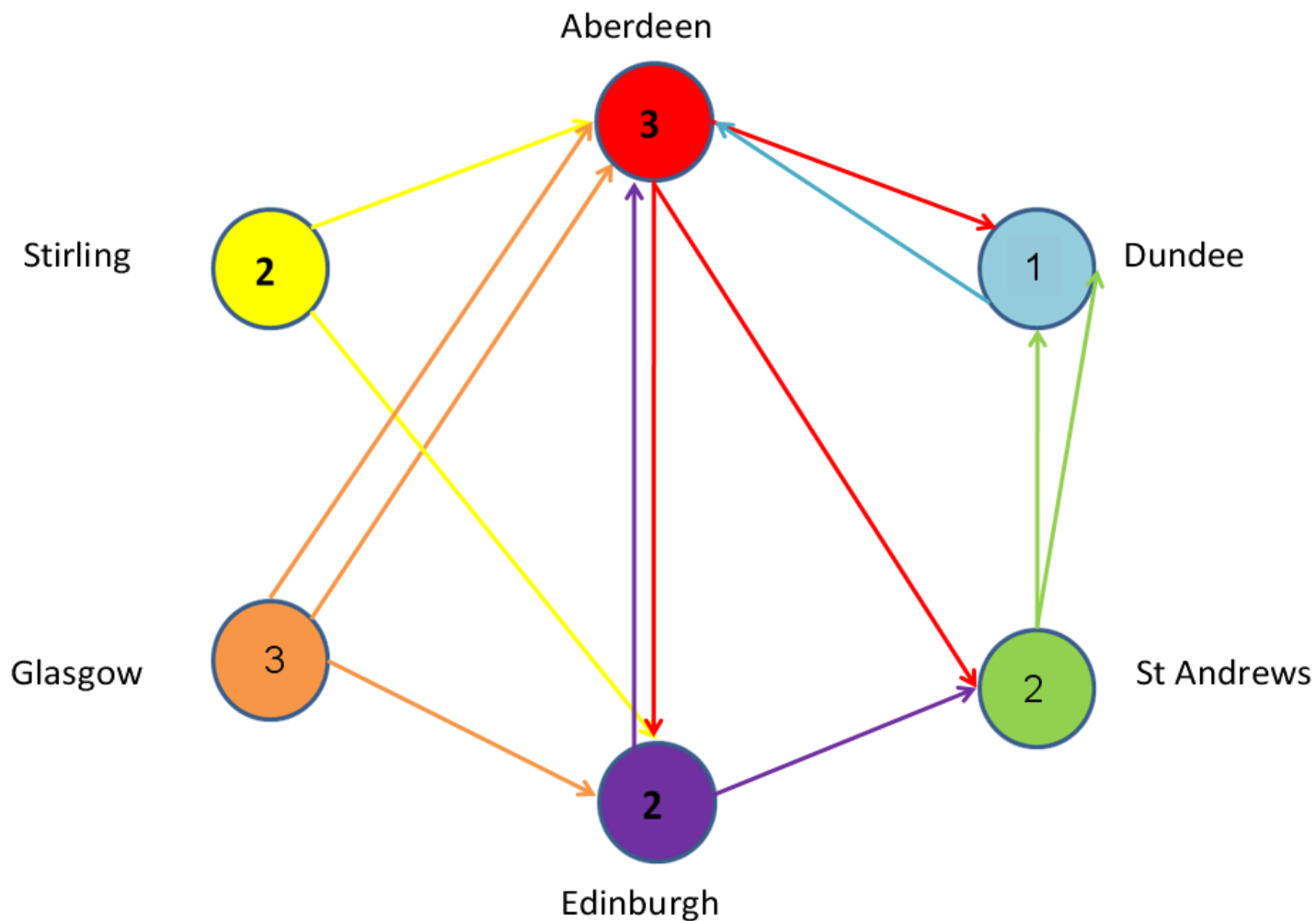


PhDs

- Next generation of well rounded, imaging-literate researchers
- Foster improved collaboration between imaging centres, imaging users and imaging providers
- Exemplar projects
- Develop useful tools for others to use in SINAPSE
- Help educate others in good imaging practices

- 4 international
- 6 EU
- 3 UK

PhDs



Distribution of 13 studentships appointed as by May 2008

Educational Strategy

- Educational strategy meeting April 2008
- Transferable Skills subcommittee 19th June
- Induction week October 2008
- Handbook
- Annual assessment and portfolio managed through website
- Educational materials :
 - E-learning modules
 - focussed 1-2 day training seminars - 2 per year;
 - on-line training tools in image analysis;
 - tutorials from SINAPSE employees
 - UK Grad Hub generic training

Knowledge Transfer

- First meeting of committee 1.7.08
- Scottish Enterprise representation
- Interface
- SUPA and other poolings
- International
- Industry
- Piloting portal for analysis software

External visibility

- Marketing strategy
- Website
- Role in successful applications
- Wellcome Trust Neuroscience Strategy Group on imaging
- MRC PET infrastructure meeting
- Clinical Research Networks meetings
- PET Advisory Group Research Subgroup
- Planned joint external meetings on
 - Ethics (RCR, AMS, ISD, other imaging centres, etc)
 - QA (IPEM),
 - IT image management (NESC, NHS IT)

Future

- Complete (maximise) chair appointments
- Establish educational activities
- Applications such as
 - Marie Curie
 - Wyeth
- Liaising other poolings (SUPA, SICSA, ScotCHEM, SULSA)
- Improve networking and engagement

SINAPSE CONTACT

- Dr Janet De Wilde
- SINAPSE Project Coordinator
- jdewilde@staffmail.ed.ac.uk
- www.sinapse.ac.uk