

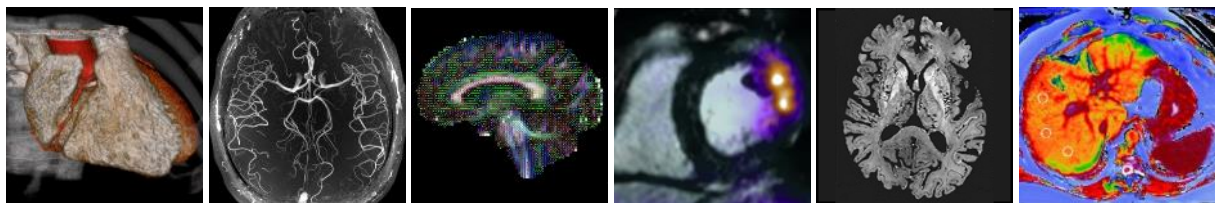
10 Years of SINAPSE

Scottish Imaging Network:
A Platform for Scientific Excellence

Annual Scientific Meeting

Monday 25th June 2018

Royal College of Surgeons of Edinburgh



Keep abreast of developments in clinical and experimental imaging.

Learn about research based around MRI, CT, PET, SPECT, EEG, MEG, ultrasound, and human optical imaging.



Keynote presentations by

Prof Marion Smits
Erasmus MC, Rotterdam



Prof David Kiely
Sheffield Pulmonary Vascular Disease Unit

Registration and abstract submission details:

www.sinapse.ac.uk/events/2018-sinapse-asm



SCO13683



SCO15096



SCO05336



SCO04401



SCO13532



SCO11159



SCO15263



Promoting further and higher education



CHIEF SCIENTIST OFFICE