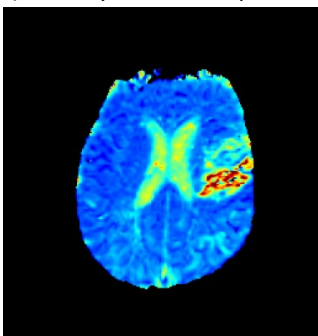


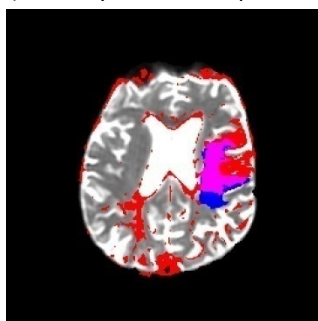
# CLINICAL RESEARCH NETWORKS

Brain Imaging provides vital information for many diseases. To ensure synergy with the developments in the Clinical Research Network's, SINAPSE maintains close links with them including representation on SINAPSE's Management Committee.

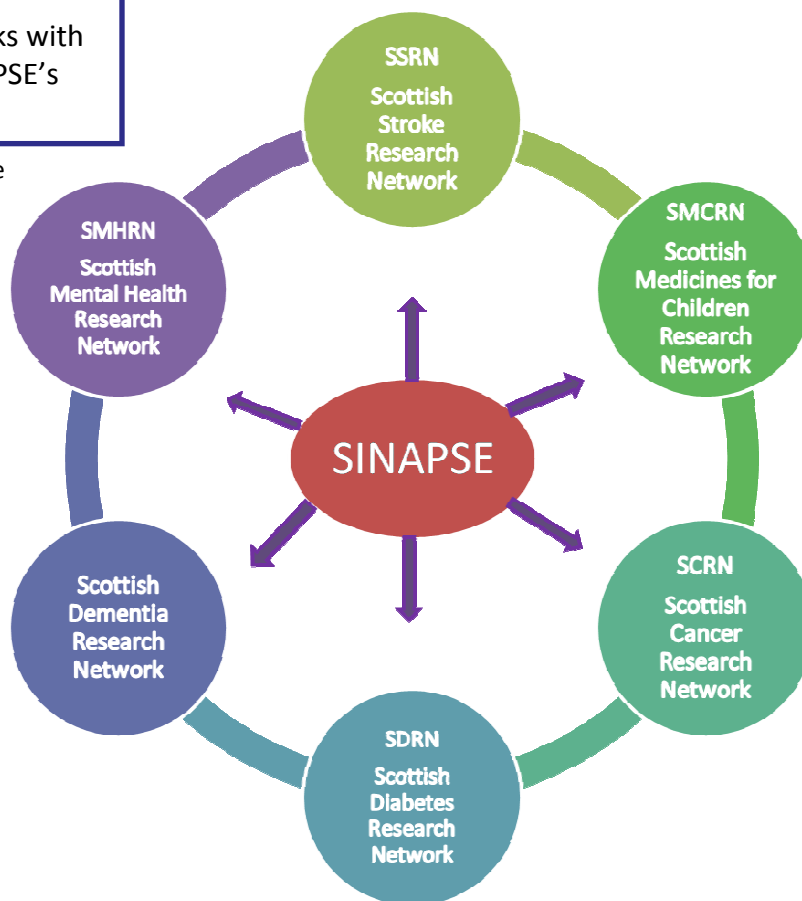
Mean Transmit Time Map of patient with a stroke (courtesy of Dr T. Carpenter, Edinburgh)



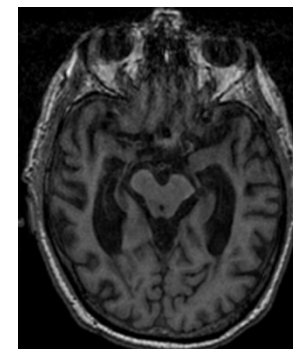
Eventual lesion extent at three months (courtesy of Dr T. Carpenter, Edinburgh)



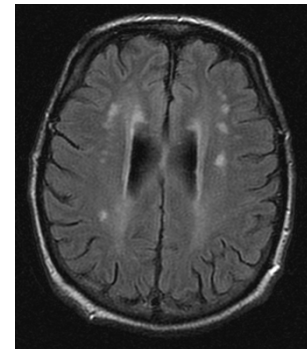
Poster prepared by Dr Janet De Wilde, SINAPSE Coordinator  
For more information see [www.sinapse.ac.uk](http://www.sinapse.ac.uk)



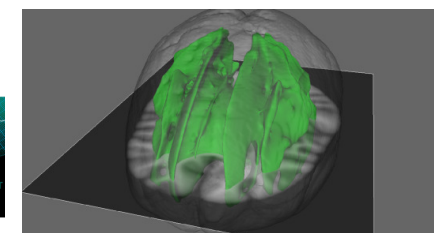
T1 MRI in Alzheimer (courtesy of Dr A. Murray, Aberdeen)



FLAIR MRI in White Matter Ischemia (courtesy of Dr A. Murray, Aberdeen)



Tractography MRI (courtesy of Dr S. Muñoz Maniega, Edinburgh)



The following Universities are charitable bodies, registered in Scotland, with registration numbers as below.

