

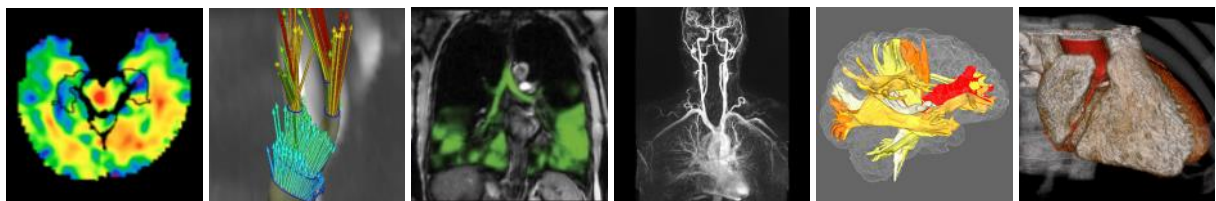


Scottish Imaging Network:  
A Platform for Scientific Excellence

Annual Scientific Meeting

Friday 16<sup>th</sup> June 2017

Teaching and Learning Centre,  
Queen Elizabeth University Hospital Glasgow



Keep abreast of developments in clinical and experimental imaging.

Learn about research based around MRI, CT, PET, SPECT, EEG, MEG, ultrasound, and human optical imaging.

Keynote presentation by **Prof Arno Villringer**  
MPI for Human Cognitive and Brain Sciences, Leipzig

*The brain as victim and culprit:  
The long path from Obesity & Hypertension to Stroke & Dementia*

Registration and programme details:

[www.sinapse.ac.uk/events/2017-sinapse-asm](http://www.sinapse.ac.uk/events/2017-sinapse-asm)



SCO13683



SCO11159



SCO21474



SCO15096



SCO13532



SCO05336

